

# Introduction to Permaculture

**Drew Carlson**

**Full Circle Designs LLC**

**[fullcircledesigns@gmail.com](mailto:fullcircledesigns@gmail.com)**

**608-220-8226**

# What is Permaculture?

“Permaculture is the use of systems thinking and design principles that provide the organizing framework for humans to consciously design landscapes which mimic the patterns and relationships found in nature, while yielding an abundance of food, fiber and energy for provision of local needs.”

David Holmgren, “Permaculture: Principles and Pathways Beyond Sustainability”

# Short Definition

The mimicking of natural ecosystem functions in order to provide all of our needs while positively affecting the landscape.

# Creators of Permaculture

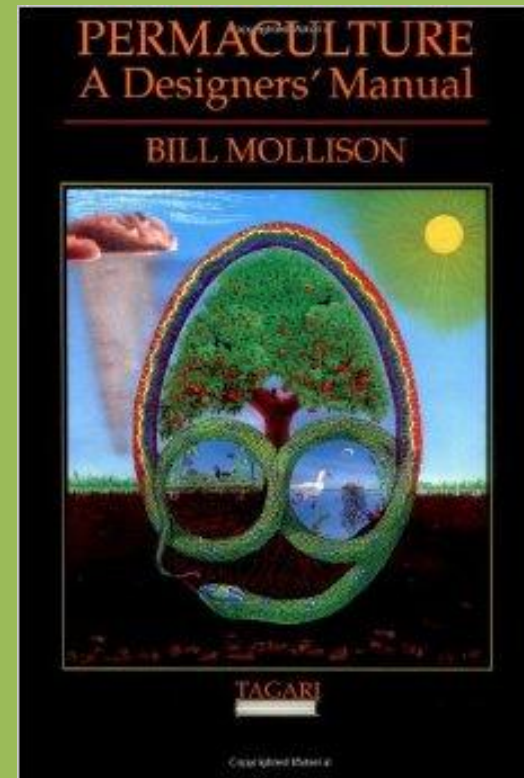
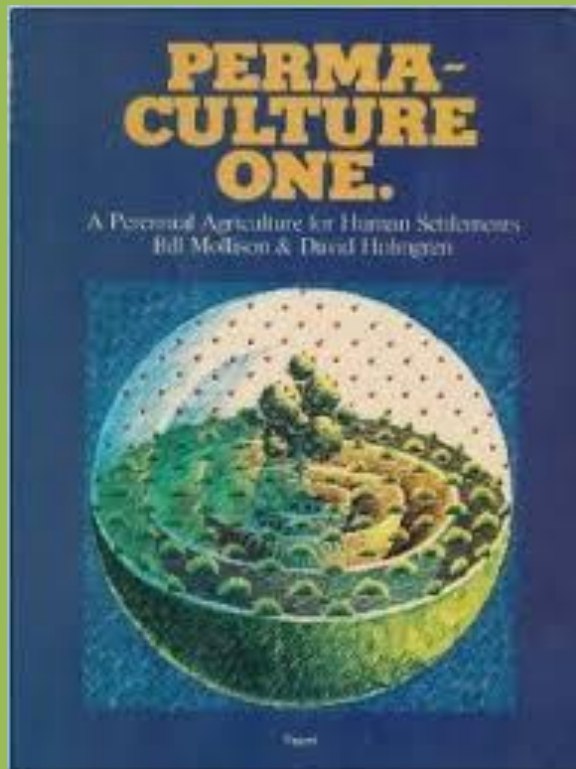
Bill Molison



David Holmgren



# Original Publications



# Permaculture Ethics

- **Care for the Earth**
- **Care for People**
- **Set Limits to Consumption and Redistribute Surplus**

# Care for the Earth

- Gaia Hypothesis
- Living Soil
- Stewardship
- Biodiversity
- Living Things



# Care for People

- Care for Self
- Non-Material Well Being



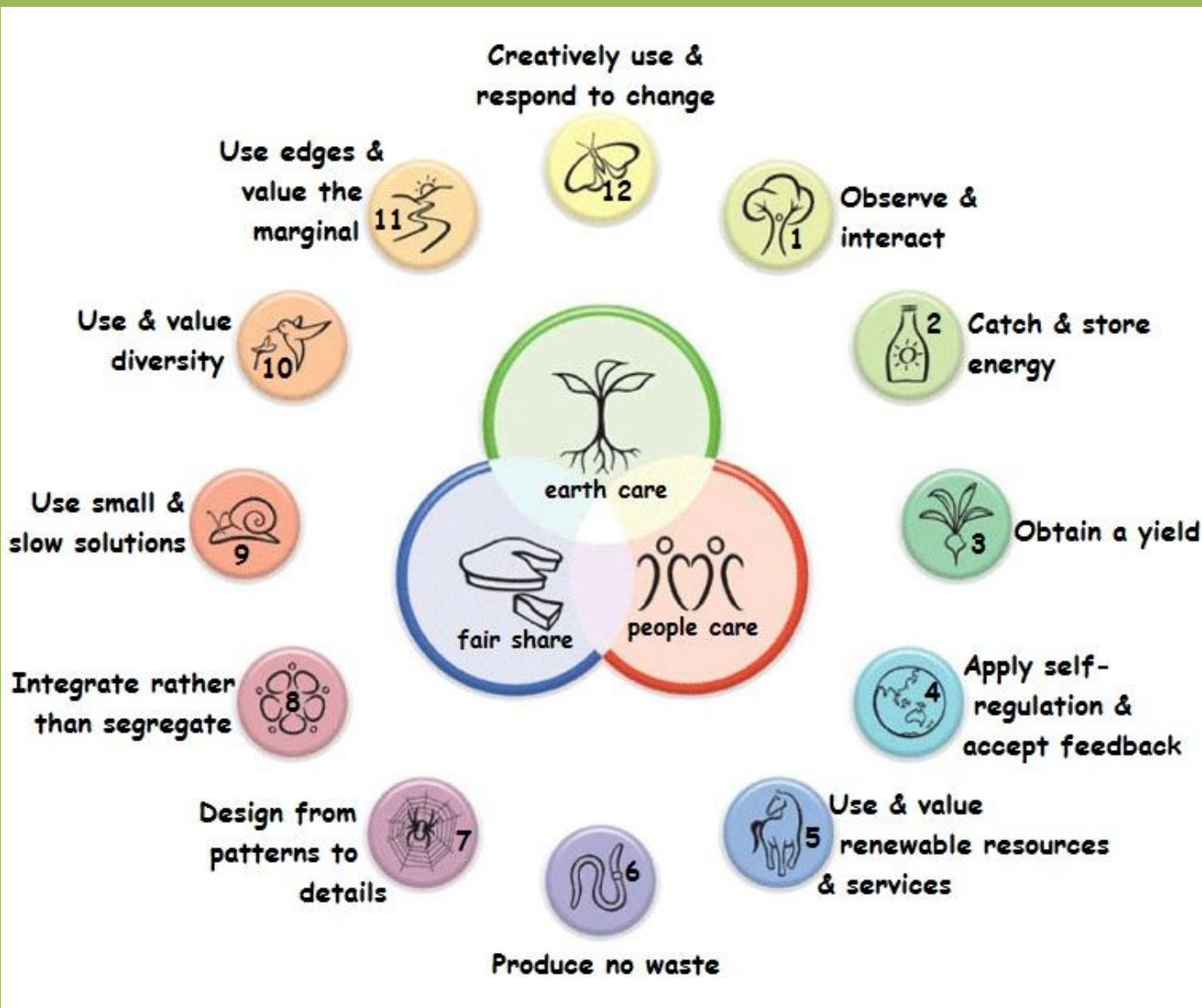


# Set Limits to Consumption and Redistribute Surplus

- Abundance and Limits of Nature
- Redistribution of Surplus



# Permaculture Principles



# Observe and Interact





# Catch and Store Energy





# Obtain a Yield



# Apply Self Regulation and Accept Feedback

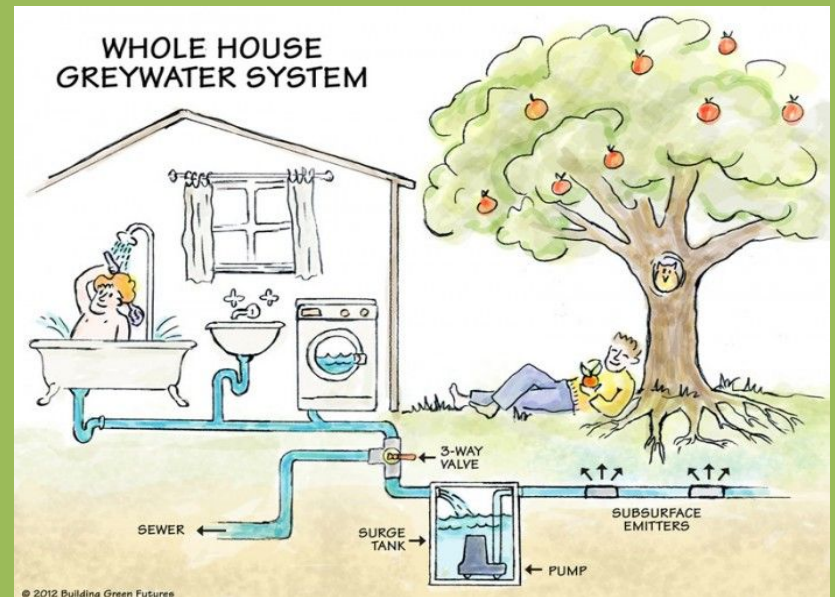




# Use and Value Renewable Resources and Services



# Produce No Waste





# Design from Patterns to Details





# Integrate Rather than Segregate





# Use Small and Slow Solutions

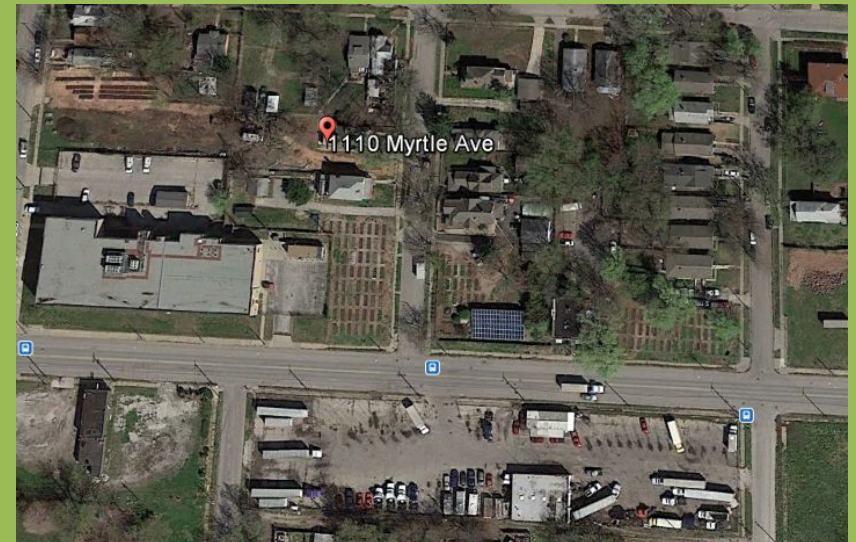
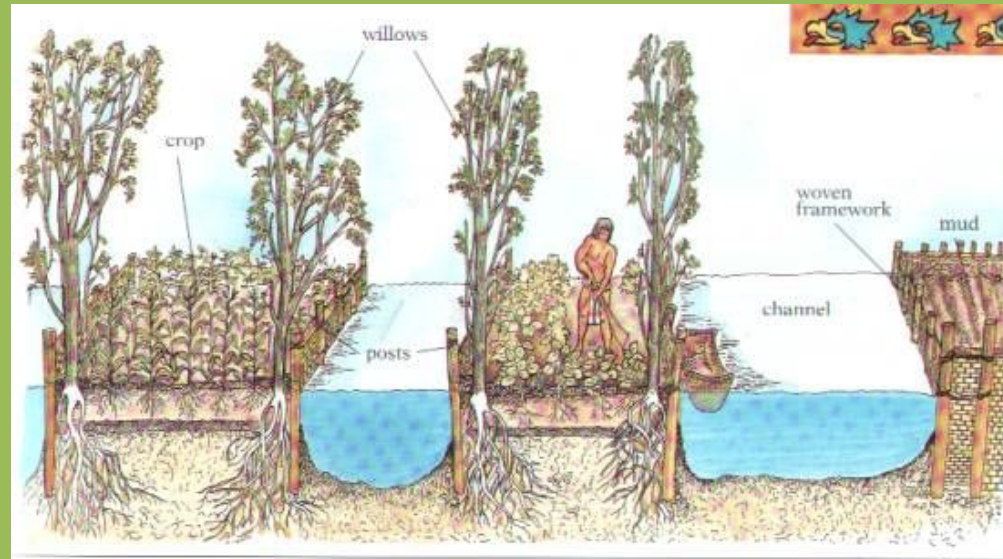


# Use and Value Diversity



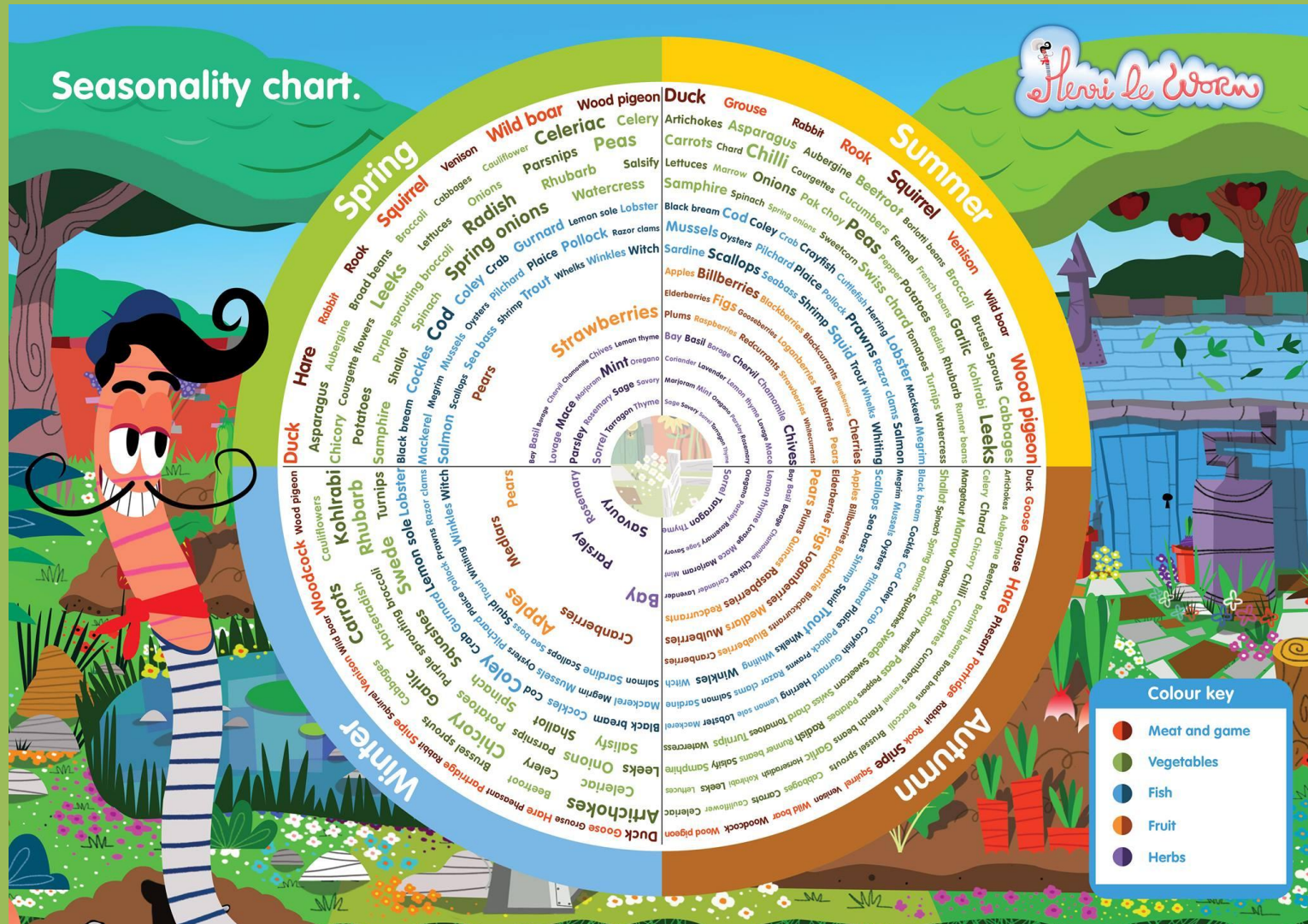


# Use Edges and Value the Marginal



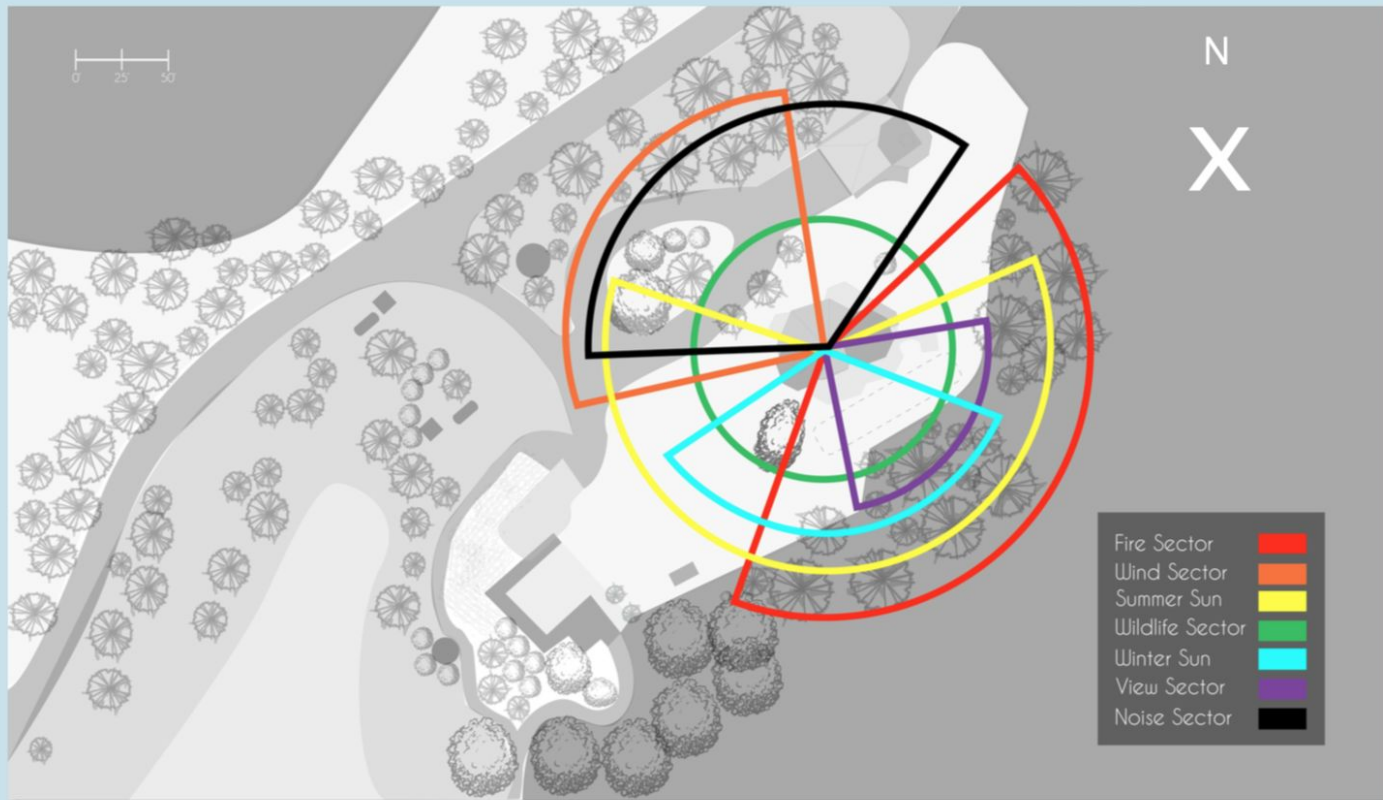


# Creatively Use and Respond to Change

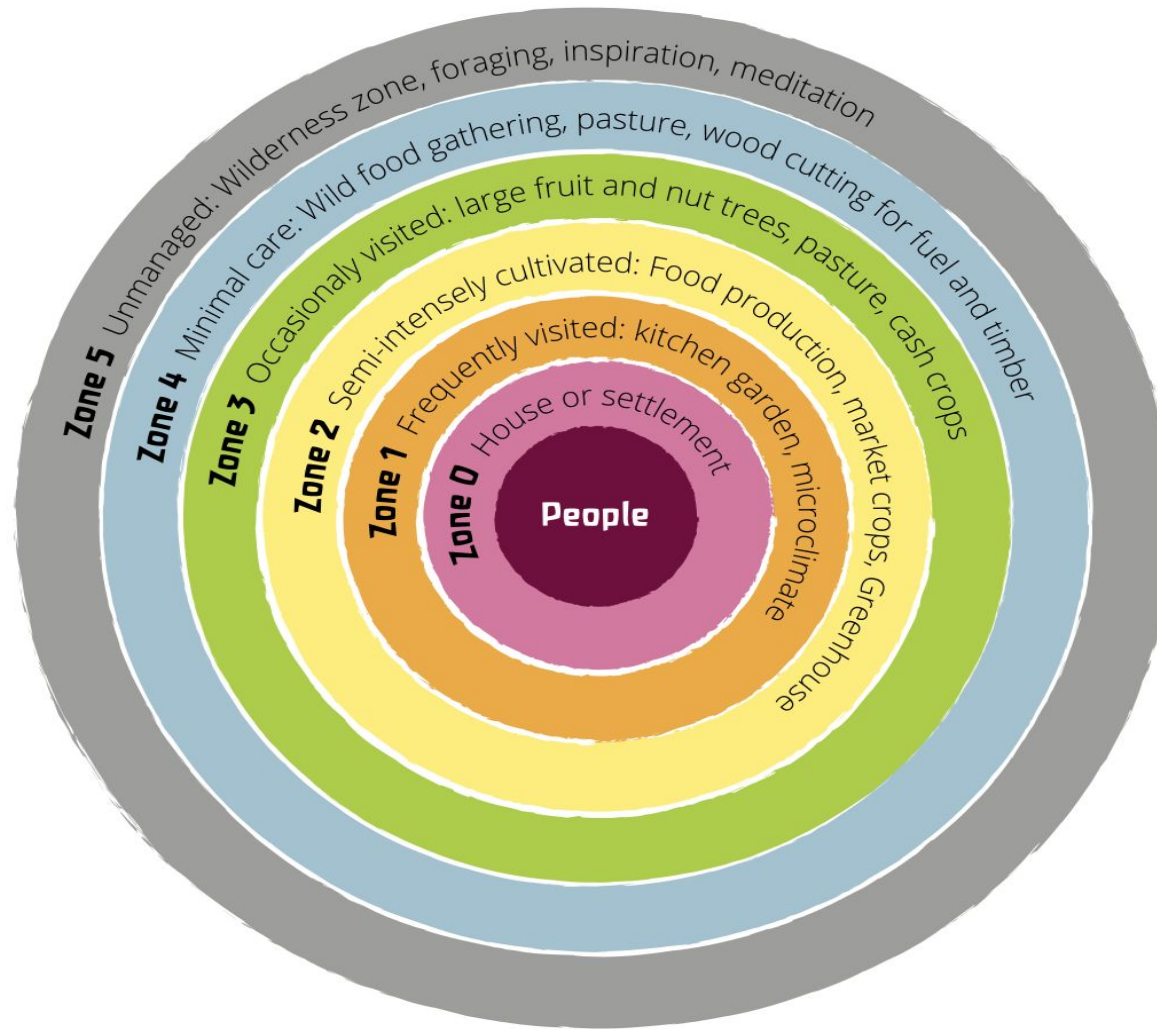


## Accounting of Energies Moving Across the Site

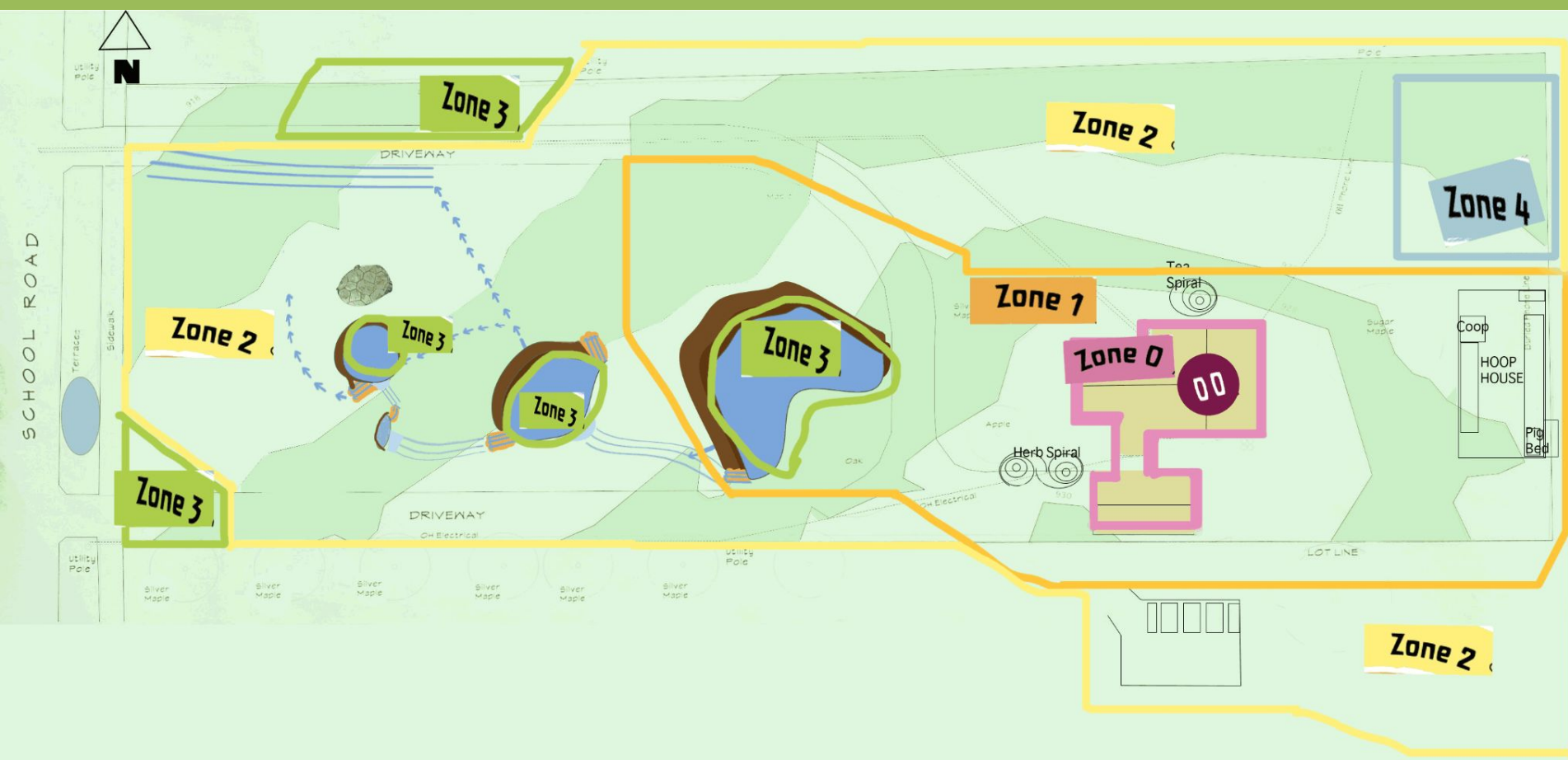
### Sector analysis

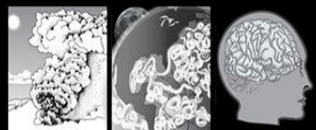


# Zone Analysis



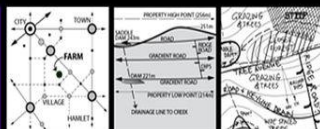






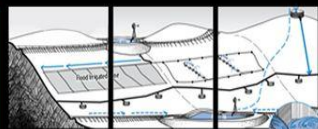
Concerns the various climates of an enterprise, be they Human or Biospheric. Effectively these climates create the rules of engagement in the application of the Regrarians Platform.

## CLIMATE 1



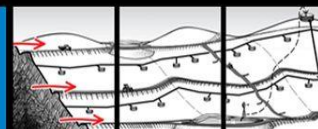
The context of the Regrarians Platform. In the Geography layer, we analyse a landscape in its catchment and its interactions with all physical elements.

## GEOGRAPHY 2



For any enterprise, water availability is fixed. We need to optimise our use of what is available and employ CLIMATE-1, GEOGRAPHY-2 and our capital

## WATER 3



ROADS, TRACKS and LANES are relatively permanent features in landscapes. Their placement defines our movement and should integrate

## ACCESS 4



Perennial woody plant systems are overarching, vital and productive elements in any landscape. They can be complex in their assembly and their placement

## FORESTRY 5

# THE REGRARIANS PLATFORM®

## BUILDINGS 6



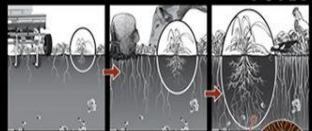
An array of structures on any holding are necessary to make the artificial sedentary production systems that humans call agriculture possible. Placement and design should follow that of other elements especially Climate, Geography, Water & Access.

## FENCING 7



How we subdivide our landscapes should follow the lines of other more permanent layers. We should use more flexible fencing infrastructure in order to accommodate the changing opportunities and yields that occur in the landscape.

## SOILS 8



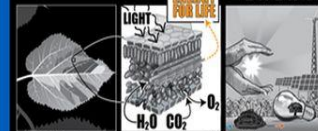
Easily destroyed and fortunately easily regenerated, soils are the foundation to the economy of life. Management is critical to the development and maintenance of soils. Our soil's protection is enhanced by considering other layers, particularly Water, Forestry & Fences.

## ECONOMY 9



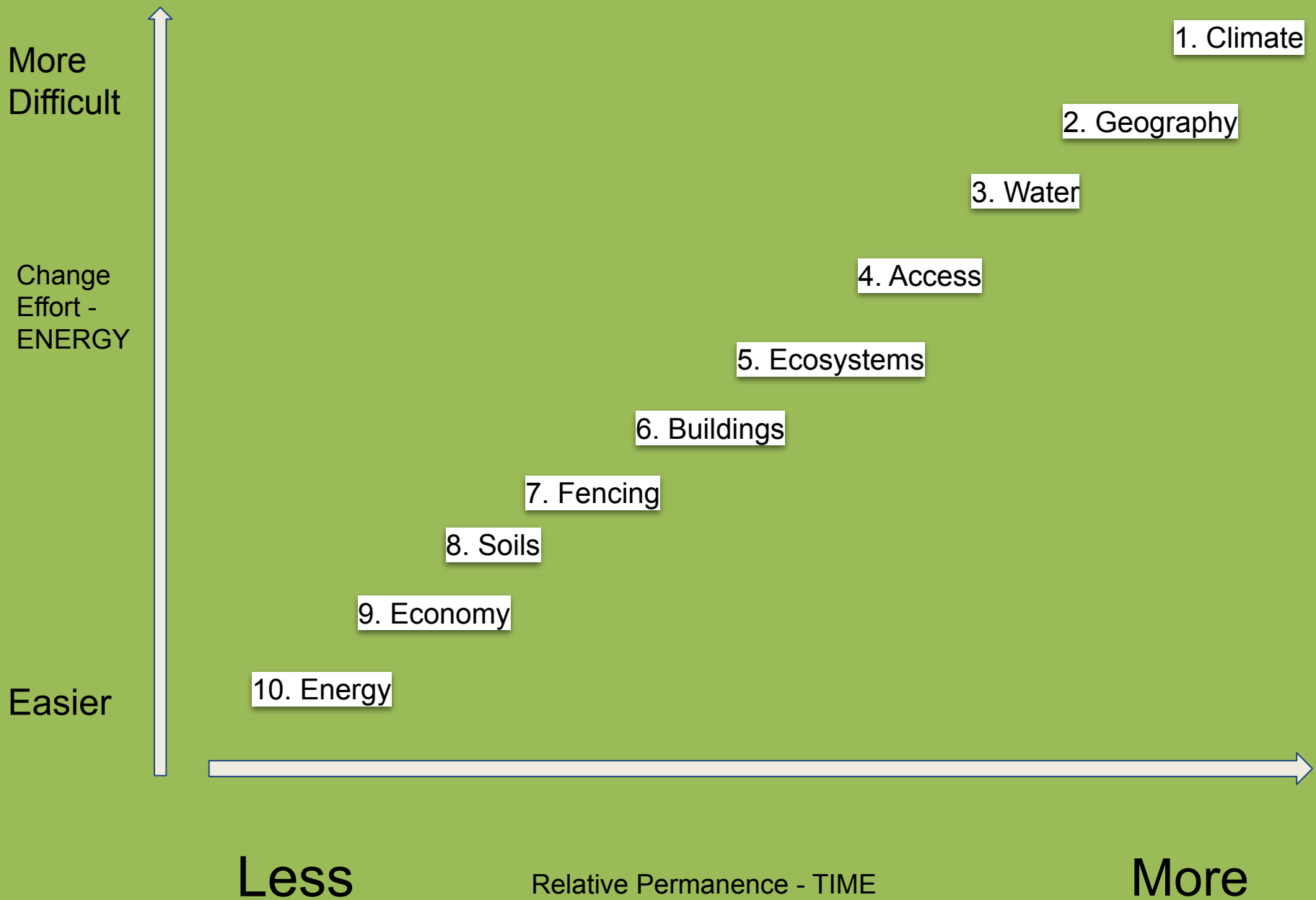
The analysis of the market and access to it has never been easier. The difficulty remains in the terms of trade, particularly with regards compliance, though slowly the tide is turning as humans are incredibly enterprising, adaptable & difficult to quell.

## ENERGY 10



Nothing is as fleeting as a photon of light and the primary role of humanity must be to enhance photosynthesis at every opportunity and encourage its positive side effects, with nearly all energy systems that humans access originating from the sun.

'Regrarians®, the Regrarians Platform® and the Regrarians® Logo are all trademarked brands and marks owned by Regrarians Ltd. founding director Darren J. Doherty – [www.Regrarians.org](http://www.Regrarians.org)'



# Events

- Wisconsin Permaculture Convergence  
[www.wisconsinpermacultureconvergence.com](http://www.wisconsinpermacultureconvergence.com)
- Madison Area Permaculture Guild Slow PDC  
<https://madisonareapermacultureguild.org/pdc2022/>

# Resources

- Permaculture Designers Manual - Bill Mollison
- Permaculture: Principles and Pathways Beyond Sustainability - David Holmgren
- The Permaculture City - Toby Hemmingway
- Gaia's Garden - Toby Hemmingway
- Earth User's Guide to Permaculture - Rosemary Morrow
- Regrarians Handbook
- Sepp Holzer's Permaculture — Sepp Holzer

# Websites

- <https://madisonareapermacultureguild.org/>
- [www.wisconsinpermacultureconvergence.com](http://www.wisconsinpermacultureconvergence.com)
- <https://permacultureprinciples.com/>
- [www.permies.com](http://www.permies.com)
- [www.permaculturenews.org](http://www.permaculturenews.org)
- [www.regrarians.org](http://www.regrarians.org)
- <https://www.discoverpermaculture.com/>

Questions?